



By Appointment to  
Her Majesty The Queen  
Supply and Maintenance  
of Horse Weighing Equipment

## **Horse Weigh®**

### **Installation of Horse Weigh Pit Weighing Platforms**

If you are able to plan your yard before commencement of building work it is advisable to consider where you will site the weighing platform so that when the concrete is laid the pit can be incorporated into the new concrete, and the drain can be linked into the yard drains.

If you have already a concrete yard then the concrete will have to be dug out to **MORE THAN** the following prescribed dimensions:

#### **Pit Frame Dimensions – “Internal”**

##### **Kentucky Model**

Length – 220.00 cms

Width - 127.0 cms

Depth - 11.50 cms

##### **Badminton Model**

Length – 220.00 cms

Width – 102.50 cms

Depth – 11.00 cms

**An aluminium frame will need to be purchased at the same time as the platform; the two will be delivered together.** The frame will create a consistently firm edge to the concrete. Concrete can then be filled to the frame edge. Please refer to photograph 1. If necessary you may fill from the edge of the frame lip back to the concrete with liquid rubber, or similar, to avoid a trip hazard. Please refer to photograph 2. For further information, please see drawing No. 140 at the end of these instructions, for the aluminium frame design and pit cross-section.

When digging the pit, provision will have to be made for drainage which can be either in the middle of the pit or at one end with a slight slope towards the drain hole so that no water sits continuously in the pit.

An exit hole for the cables from the load bars will need to be made in the wall of the pit nearest to where you are going to site the indicator on the wall. It is advisable that the duct for the cables is big enough so that the cables may be removed for checking for maintenance checks. **We strongly advise that these cables are NOT placed in any wall cavity (hollow space within a wall), as this makes it very difficult to remove them should a loadbar repair be necessary.**

Please note that the edge of the platform must not touch the edge of the surrounding concrete otherwise there will be inaccurate weights recorded.

ONCE a WEEK a screwdriver or similar instrument must be run round the edge of the platform to make sure that there are no stones, chippings or other material touching both the platform and the edge of the concrete.

If situating the platform in a passageway it is advisable to locate it in the middle of the passageway where the horses walk naturally.

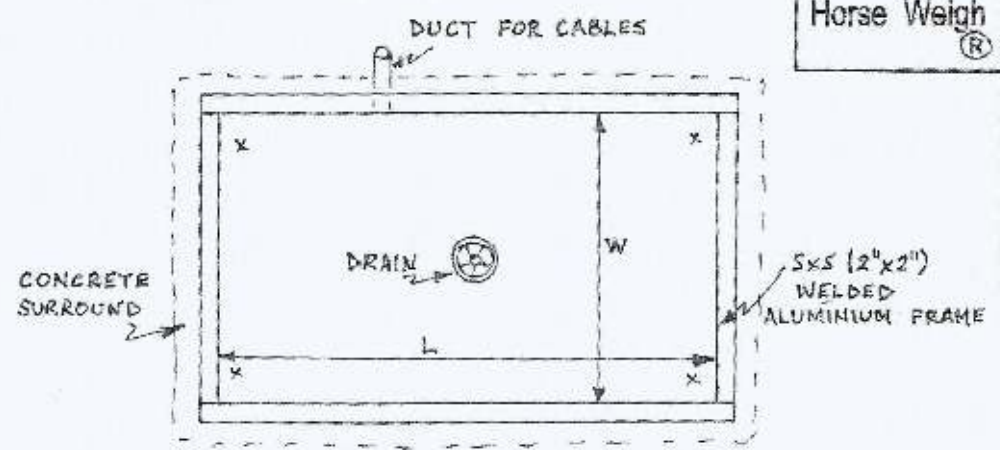
Once the carrying handles have been removed, and the indicator attached to the blue cables the platform is ready to weigh horses.



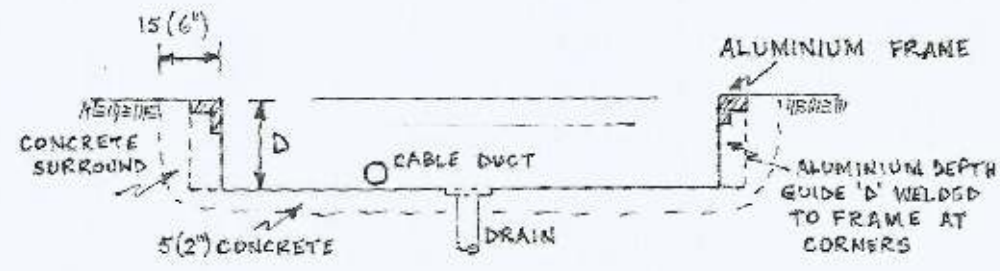
Photograph 1



Photograph 2



PLAN



CROSS SECTION

PIT INTERNAL DIMENSIONS

	KENTUCKY		BADMINTON	
	FOR TRAINING YARDS & LARGE HORSES	FOR BREEDING STUDS	FOR TRAINING YARDS & LARGE HORSES	FOR BREEDING STUDS
L	220.0 (86 <sup>5</sup> / <sub>8</sub> "	217.5 (85 <sup>5</sup> / <sub>8</sub> "	220.0 (86 <sup>5</sup> / <sub>8</sub> "	217.5 (85 <sup>5</sup> / <sub>8</sub> "
W	127.0 (50"	124.5 (49"	102.5 (40 <sup>3</sup> / <sub>8</sub> "	100.0 (39 <sup>3</sup> / <sub>8</sub> "
D	11.2 (4 <sup>3</sup> / <sub>8</sub> "	11.2 (4 <sup>3</sup> / <sub>8</sub> "	10.8 (4 <sup>1</sup> / <sub>4</sub> "	10.8 (4 <sup>1</sup> / <sub>4</sub> "

**NOTES**  
 1. DIMENSIONS IN CMS. (INCHES IN BRACKET).  
 2. TO AVOID THE WEIGHING PLATFORM ROCKING, THE TOP SURFACE OF THE CONCRETE IN THE 4 CORNERS (MARKED 'x' ABOVE, I.E. BENEATH THE BLACK SUPPORT PADS) SHOULD BE IN THE SAME PLANE AT INTERNAL DEPTH "D".

**HORSE WEIGH PLATFORM RANGE**  
 © Copyright 2016 F.W.S. BEDELL  
 Neuadd Isaf, Penybont, Llandrindod Wells, Powys LD1 6SW, UK  
 Tel: +44(0) 1939 220967 Fax: +44(0) 1939 220967  
 Mobile: +44(0) 777 478 3247  
 Email: william@horseweigh.com www.horseweigh.com  
 Makers of "Stavoley" Pedigree Limousins

RECESSED PITS FOR KENTUCKY & BADMINTON WEIGHING PLATFORMS

REVISIONS	DRAWING No. 140	SCALE: NOT TO SCALE	DATE: JUNE 2016
-----------	-----------------	---------------------	-----------------